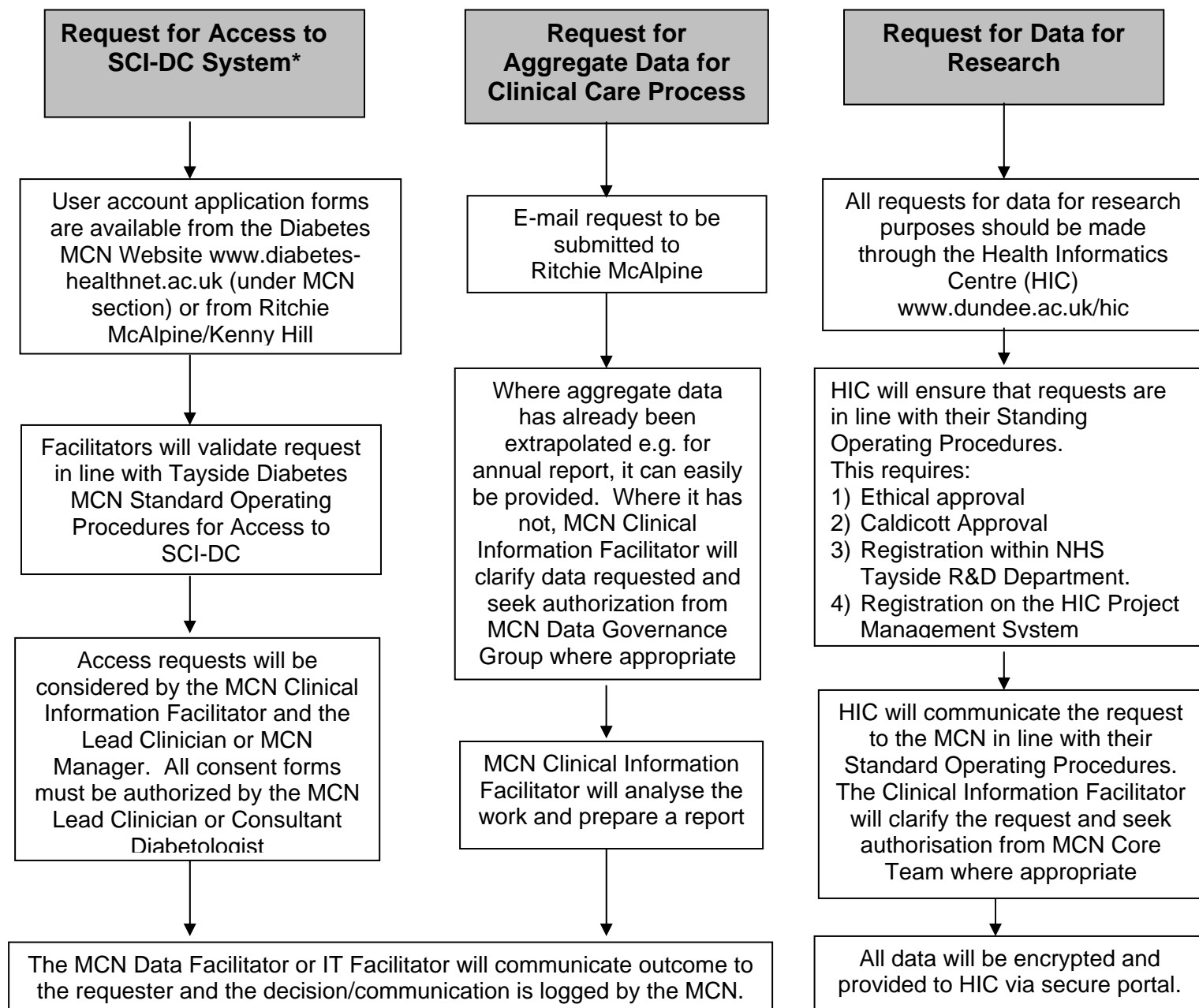


Local Procedure for SCI-DC Data Access



**MCN Clinical Information Facilitator ritchie.mcalpine@nhs.net
MCN Technical Support Specialist kenny.hill@nhs.net**

www.diabetes-healthnet.ac.uk

* Excludes staff associated with a general practice. Each practice should have a nominated administrator who is responsible for managing accounts for their staff.